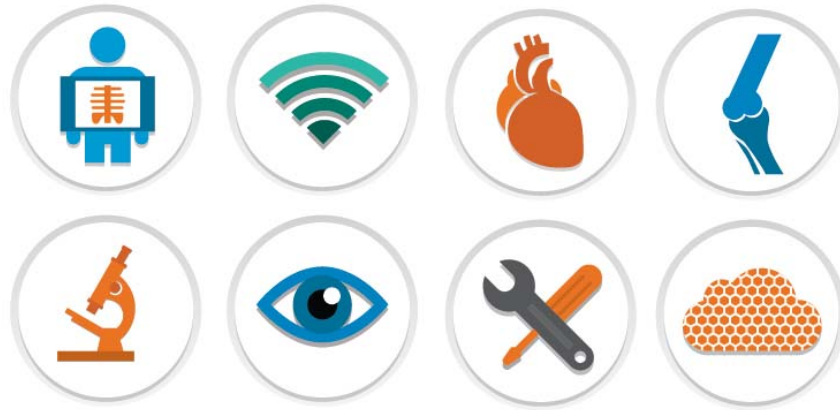


innovative imaging™



iConnect® Enterprise Archive
v. 10.0

IHE INTEGRATION STATEMENT

Merge Healthcare
900 Walnut Ridge Drive
Hartland, WI 53029
USA

MERGE

877.44.MERGE • merge.com

 [@MergeHealthcare](https://twitter.com/MergeHealthcare)

 linkedin.com/company/merge-healthcare

 facebook.com/MergeHealthcare

© 2015 Merge Healthcare. The information contained herein is confidential and is the sole property of Merge Healthcare. None of the information may be reproduced, copied, and/or re-distributed electronically, manually, or otherwise to any person without advance written permission from Merge Healthcare, except as may be expressly authorized by contracts or other agreements between Merge Healthcare and its customer. Merge Healthcare® and AMICAS are registered trademarks and VERICIS, RadSuite, Abraxas, and iConnect are also trademarks of Merge Healthcare. Other trademarks or service marks referred to herein are the property of their respective owners.

For application support or to report issues with user documentation, contact Customer Support:

- In North America: call toll-free 1-877-741-5369
- Outside of North America: +31.40.299.0773
- Email: support@merge.com

Canadian Device 40020

**Australian Sponsor
(Regulatory Affairs Only)**
Emergo Asia-Pacific Pty Ltd.
Darling Park, Tower II, Level 20
Sydney, NSW 2000 Australia

Telephone numbers

Telephone: +61 (0) 2.9006.1662
Fax: +61 (0) 2.9006.1010



EMERGO EUROPE
Molenstraat 15
2513 BH, The Hague
The Netherlands
Tel: +31 (0)70 345 8570
Fax: +31 (0)70 346 7299

Doc #	Revision	Date	Description
ECM-5676	3.0	8/28/15	Removed "for Imaging" from XDS.b line.

IHE Integration Statement		Date
		2014
Vendor	Product Name	Version
Merge Healthcare	iConnect® Enterprise Archive	10.0
This product is intended to implement all transactions required in the IHE Technical Framework to support the IHE Integration Profiles, Actors and Options listed below:		
Integration Profiles Implemented	Actors Implemented	Options Implemented
Scheduled Workflow	Image Manager / Image Archive	None
	Performed Procedure Step Manager	None
Patient Information Reconciliation	Image Manager / Image Archive	None
	Performed Procedure Step Manager	None
Consistent Presentation of Images	Image Manager / Image Archive	None
Presentation of Grouped Procedures	Image Manager / Image Archive	None
	Performed Procedure Step Manager	None
Evidence Documents	Image Manager / Image Archive	None
Key Image Note	Image Manager / Image Archive	None
Simple Image and Numeric Report	Report Repository	None
	Enterprise Report Repository	None
	External Report Repository Access	None
Access to Radiology Information	Image Manager / Image Archive	None
	Report Repository	None
	External Report Repository Access	None
Nuclear Medicine	Image Manager / Image Archive	None
Cardiac Catheterization Workflow	Image Manager / Image Archive	Intermittently Connected Modality Cardiac Cath
	Performed Procedure Step Manager	None

Echo Workflow	Image Manager / Image Archive	Echocardiography Intermittently Connected Modality
	Performed Procedure Step Manager	None
Evidence Documents - Cardiology	Image Manager / Image Archive	None
Consistent Time (CT)	Time Client	None
Mammography	Image Manager / Image Archive	None
Stress Testing Workflow	Image Manager / Image Archive	None
	Performed Procedure Step Manager	None
Cross-Enterprise Document Sharing for Imaging (XDS-I.b)	Image Document Source	Set of DICOM Instances
Cross-Enterprise Document Sharing (XDS.b)	Document Repository	None
Audit Trail and Node Authentication (ATNA)	Secure Application	None
Patient Identifier Cross-reference (PIX)	Patient Identifier Cross-reference Consumer	None
Patient Demographics Query (PDQ)	Patient Demographics Consumer	None
Internet address for vendor's IHE information:	www.merge.com/Support/Resources/IHE-Statements.aspx	
Links to Standards Conformance Statements for the Implementation		
HL7	www.merge.com/Support/Resources/HL7-Specs-and-Statements.aspx	
DICOM	www.merge.com/Support/Resources/DICOM-Conformance-Statements.aspx	
Links to general information on IHE		
In North America: http://www.ihe.net	In Europe: http://www.ihe-europe.net	In Japan: http://www.ihe-j.org