



# Merge Partners Catalog

# Contents

01

---

Introduction

02

---

Imaging Solutions Partners

Cardiology

Digital Pathology

Enterprise Imaging

Hemodynamics

Infrastructure

Radiology

03

---

About Merative



SECTION 01

# Introduction

## About this eBook

Merative collaborates with health tech innovators and entrepreneurs to support the development and delivery of new solutions that put people at the center of health and help our partners break into new markets.

This guide is your one-stop-shop catalog to our ecosystem of Merge imaging solutions partners in infrastructure, radiology, cardiology, pathology, and enterprise imaging. In the following section, you'll see how each of our partners in these four categories support, and integrate with, products within the Merge Imaging Suite. All descriptions and related materials have been provided by Merative's partners.

Read on to learn more about trusted medical imaging partners and how tapping into this ecosystem can help you accelerate your own enterprise imaging transformation.



SECTION 02

# Imaging Solutions Partners

## Cardiology

### Circle CVI

Circle Cardiovascular Imaging Inc. is a prominent global cardiac imaging company, providing AI-based multi-modality reading and reporting solutions for cardiac MR, cardiac CT and cardiac Interventional Planning. Circle's cvi42 imaging platform is used to interpret millions of annual cardiac exams in over 80 countries and integrates with Merge Cardio to give physicians the tools to accurately quantify and diagnose complex cardiovascular diseases, improve patient outcomes and optimize how healthcare resources are used.

[More about Circle CVI ↗](#)

### Cardio Server

Cardio Server, now part of the Baxter global portfolio, is a leader in diagnostic, critical care, kidney care, nutrition, hospital and surgical products for patient homes, hospitals, physicians' offices and other care sites in more than 100 countries. Its ECG management software leverages a single web-based visualization platform to view all noninvasive diagnostic cardiology data, to create a more complete cardiovascular record.

[More about Cardio Server ↗](#)



SECTION 02

# Imaging Solutions Partners

## Cardiology

### INVIA

INVIA is dedicated to developing advanced non-invasive cardiac imaging software for medical professionals to optimize patient care. INVIA's 4DM software processes, reviews and quantitatively analyzes nuclear medicine, PET and CT patient studies; performs quantitative measurements of tracer uptake over time to aid in the interpretation of myocardial perfusion, function, viability, blood pool (MUGA or ERNA), amyloidosis, sarcoidosis and myocardial blood flow images; and provides hybrid CT image review with quantified CT Coronary Artery Calcium Scoring. 4DM integrates with Merge Cardio to provide a streamlined QA, review and reporting workflow with discrete data integration into Merge Cardio reporting and analytics.

[More about INVIA ↗](#)

### TOMTEC

TOMTEC Imaging Systems GmbH is a global leader in medical imaging software solutions, supporting physicians with increased ultrasound quality and efficiency through automated and reproducible complex measurements. The TOMTEC-ARENA cardiovascular imaging solution provides automated clinical tools and vendor-neutral, multi-modality capabilities that eliminate user variability, so clinicians no longer have to worry about inconsistencies between diagnostic imaging labs. Its clinical practice tools and advanced analysis tools are seamlessly integrated into your existing workflow.

[More about TOMTEC ↗](#)



SECTION 02

# Imaging Solutions Partners

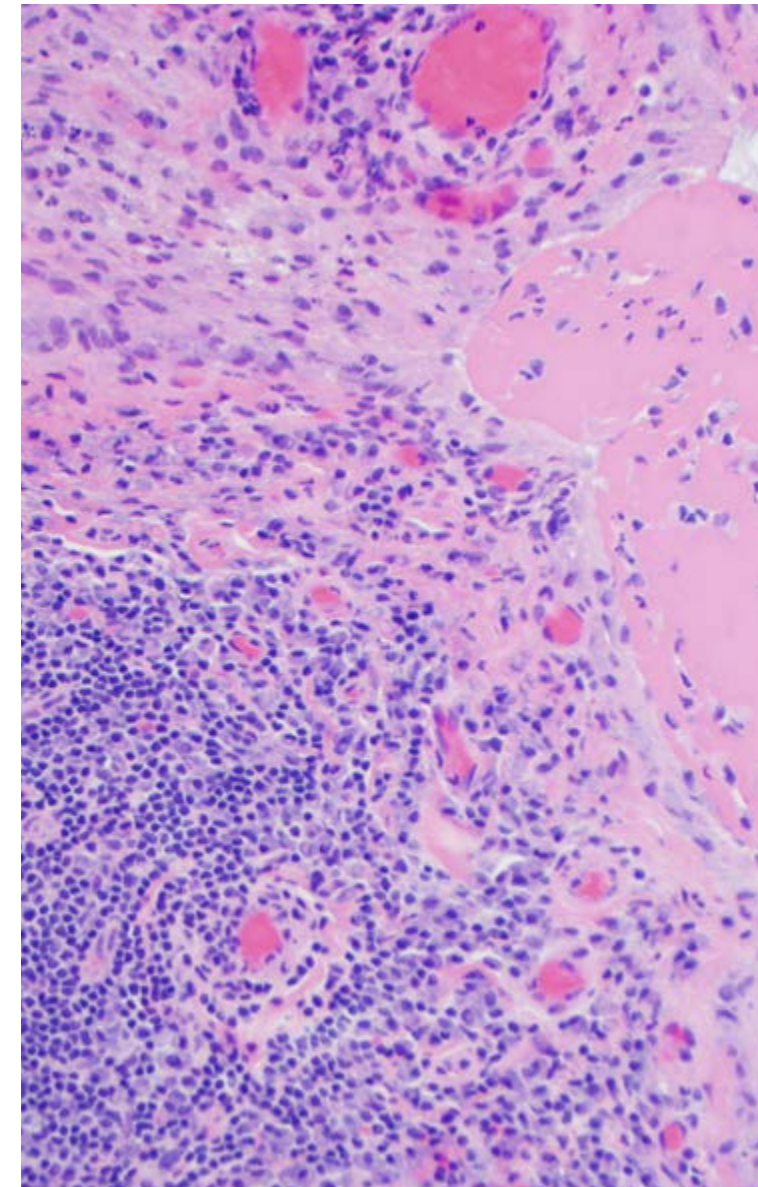
---

## Digital Pathology

### Indica Labs

Indica Labs is the global leader in AI-powered digital pathology software and services. Our flagship HALO® and HALO AI platform revolutionizes quantitative evaluation of whole slide images. HALO Link provides a collaborative environment for image management while HALO AP® delivers CE-IVDR AI-enabled enterprise digital pathology for primary diagnosis. Through a commitment to open pathology and a combination of unmatched performance, scalability, and ease-of-use, we help pharma companies, diagnostic labs, hospitals, research organizations, and Indica's own Cloud and Pharma Services make discoveries and diagnoses that transform patient care and propel scientific discovery.

[More about Indica Labs ↗](#)





SECTION 02

# Imaging Solutions Partners

## Enterprise Imaging

### ImageMover

ImageMover Software provides seamless image connectivity solutions that integrate medical images with a health system's image archive and EHR systems. ImageMover Modular and Flexible Enterprise solutions rapidly capture, distribute and archive Encounter Based images (OB Ultrasound, Ophthalmology, Anesthesia Guidance, Endoscopy, Microscopy, Medical Photos, Videos, PDF Reports, Scanned Documents, EKG, Pathology, POCUS, etc.) across the enterprise and align with HIMSS Digital Imaging Adoption Model. ImageMover Software integrates with Merge VNA and Merge Universal Viewer to connect disparate imaging workflows, make them accessible from any workstation or mobile device, and ensure all images are easily viewed, shared and exchanged by clinicians on a single pane of glass. With ordered and non-ordered images centrally located, the entire care team has easy access to side-by-side comparisons of current and prior images to deliver first-time diagnosis, enhance patient care and experience, reduce staff burnout and retain talents, and deliver care at a lower cost.

[More about ImageMover ↗](#)

### TIMS

TIMS Medical offers the TIMS MVP family of systems for the video recording, editing, reporting, and archiving of any medical imaging procedure to enterprise imaging and connectivity to EMRs. TIMS MVP enables HD video recording and includes advanced diagnostic imaging tools for editing, graphic annotation, measurement, timing, scoring, notes, reporting and much more. With seamless connectivity to enterprise imaging and EMRs, TIMS MVP optimizes productivity, cuts costs, and enhances patient outcomes. TIMS Medical has over 5000 systems installed worldwide, improving the productivity for radiology, ENT, GI, and surgical imaging departments by helping realize the true power of enterprise imaging and EMR availability.

[More about TIMS ↗](#)



SECTION 02

# Imaging Solutions Partners

## Hemodynamics

### Cedaron

Cedaron's CardiacCare is the leading software solution for participating in national databases like the American College of Cardiology (ACC), the Society of Thoracic Surgeons (STS), and the American Heart Association (AHA) registries. Integrated into Merge Hemo, CardiacCare automates and validates data collection at the point of care; centralizes the client's data; and standardizes the data abstraction processes for faster, easier access, all to help improve the quality of patient care at scale. Inherent data analytics provide clients with real-time visibility into their data. CardiacCare comes with over 300 flash reports, including all ACC metric reports, and clients are able to create adhoc reports as needed. Dashboard reports are user-specific, generating updated information on every login, so clients have actionable data at the right time.

[More about Cedaron ↗](#)

### VUEMED

VUEMED solves clinical inventory management, supply chain and product utilization documentation problems with its suite of UDI-compliant RAIN RFID and barcode scanning solutions. VUEMED supplies Merge hemodynamic customers with VueSync, its Hemodynamic Inventory Catalog Service of cardiovascular devices and supplies. Fully loaded with over 70,000 cardiovascular items, VueSync is continuously and automatically updated by the Hemodynamic Server daily, to ensure complete and accurate data capture for each item at the point of care. VueSync relieves clinical staff of the burden of manual entries, reconciliations and upkeep, and ensures accurate clinical documentation.

[More about VUEMED ↗](#)





SECTION 02

# Imaging Solutions Partners

## Infrastructure

### Barco

Barco is the market leader in diagnostic displays, putting together an extensive lineup of high-precision medical monitors that bring accuracy and efficiency to a broad range of healthcare disciplines, including radiology, mammography, digital pathology, clinical review, surgery and dentistry. With integrations across the Merge imaging portfolio, Barco ensures stable image quality across a display's lifetime, thanks to automated calibration tests and real-time, cloud-based quality assurance and reporting – keeping an eye on your displays so you don't have to. By providing medical staff with the complete and most accurate picture, Merative and Barco monitors together accentuate healthcare services and enable more informed decisions, when and where it matters most.

[More about Barco Monitors ↗](#)

### Dell

Dell OEM is a business unit of Dell Technologies that has partnered with Merative for over 10 years to help Merge customers achieve lower costs, higher quality solutions and better patient outcomes. Dell OEM hardware solutions integrate with Merge imaging solutions to enable hospitals to easily store and recover imaging files. Together, Dell OEM and Merge imaging solutions create a patient-centric, reliable and stable user experience, backed by years of customer support.

[More about Dell OEM ↗](#)

### EIZO

EIZO is a worldwide leader in digital medical imaging solutions, providing a wide variety of high-end, high-quality and high-stability diagnostic displays. These include ultra-high-resolution monitors for breast imaging and tomographic studies. EIZO also offers QC/QA solutions for managing multiple and/or large-scale display implementations.

[More about EIZO Monitors ↗](#)

### NetApp

NetApp® is a global cloud-enabled, data-centric software company, serving over 1,000 hospitals with storage and services that simplify management of medical imaging data and quickly replicate on-premises imaging repositories to the hospital's preferred public cloud. NetApp data storage and services give medical imaging teams the cutting-edge capabilities they need to manage, index, discover, audit, and query medical imaging data at scale, on premises or in the cloud.

[More about NetApp ↗](#)

SECTION 02

# Imaging Solutions Partners

## Infrastructure

### Pure Storage

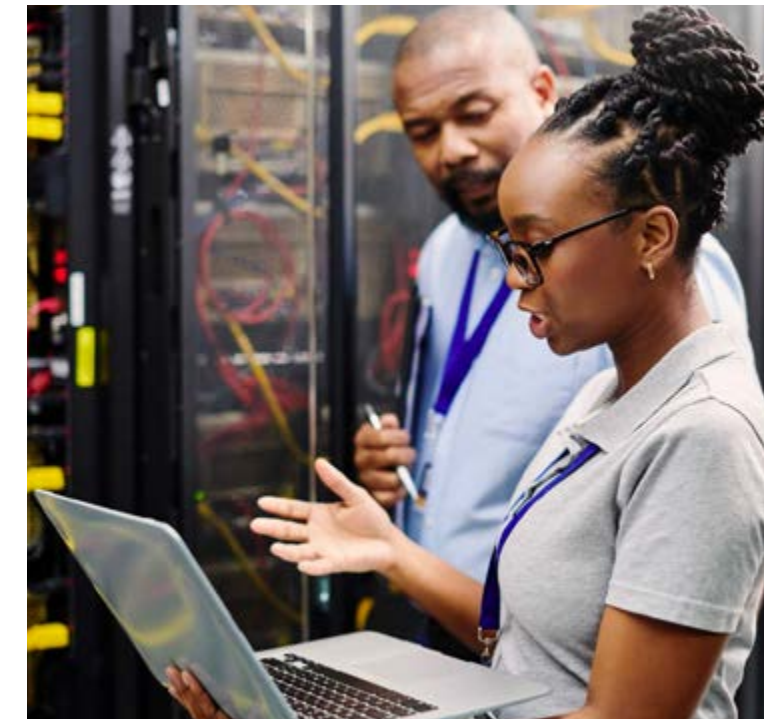
Pure Storage (NYSE: PSTG) uncomplicates data storage, forever. Pure delivers a cloud experience that empowers every organization to get the most from their data while reducing the complexity and expense of managing the infrastructure behind it. Pure's commitment to providing true storage as-a-service gives customers the agility to meet changing data needs at speed and scale, whether they are deploying traditional workloads, modern applications, containers, or more. And with a certified customer satisfaction score in the top one percent of B2B companies, Pure's ever-expanding list of customers are among the happiest in the world. The Merge Enterprise Imaging software stack can be deployed on a single Pure Storage solution, guaranteeing simplicity, scalability and performance where it matters. With support for Pure Storage's Evergreen portfolio of subscriptions, customers never have to worry about fumbling through model numbers, vendor nickel-and-diming, downtime or the tech becoming obsolete.

[More about Pure Storage ↗](#)

### RackTop

RackTop Systems and Merative have partnered to protect patient data and reduce cyber risk across healthcare. RackTop's best-in-class BrickStor Security Platform follows a data-centric Zero Trust model that empowers the public and private sector to actively defend their sensitive unstructured data from the escalating presence of ransomware, insider threats and nation-state-sponsored cyberattacks. With the added capabilities of BrickStor SP, new and existing Merge clients can better safeguard their high-value medical imaging files – including X-rays, MRIs and CT scans – from ransomware attacks that pose significant threats to patient safety.

[More about RackTop ↗](#)





SECTION 02

# Imaging Solutions Partners

## Radiology

### 3M Health Information Systems

3M Health Information Systems helps radiology departments and imaging centers close the loop between clinical care and revenue integrity. Its AI-powered software 3M™ M\*Modal Fluency for Imaging enables speech-driven reporting workflows, provides real-time feedback with computer-assisted physician documentation and integrates seamlessly with Merge PACS to help radiologists create complete, accurate imaging reports that support improved patient care and compliance.

[More about 3M ↗](#)

### openDoctor

openDoctor provides Merge clients with real-time patient access and referring engagement platforms for health systems and outpatient radiology practices. openDoctor is fully integrated with Merge imaging solutions, enabling real-time patient scheduling, digital forms, check-in functionality and patient notifications. For the referring provider community, Merge solutions and openDoctor allow providers to enter orders, schedule patients and view images. This is done within the client's existing workflow, with the solution configured to meet their unique needs. Together Merge solutions and openDoctor are helping to drive digital transformation to free up front staff members and give patients 24/7 access to our clients.

[More about OpenDoctor ↗](#)

### Sorna

Sorna's Vertex software platform is integrated into Merge PACS, allowing users to burn CDs; digitally send and receive DICOM and non-DICOM data; import; scan documents; convert files and images to DICOM; capture, edit and convert videos; and intelligently route DICOM. Purchase only the features you need. Simplify and improve your workflow with Vertex: the affordable, easy-to-use, all-in-one solution.

[More about Sorna ↗](#)

### TeraRecon

A ConcertAI company serving 1,800 global clinical sites and a Best-in-KLAS solutions provider for AI-empowered radiology, oncology, cardiology, neurology and vascular surgery. TeraRecon's vendor-neutral solutions provide a single, unified and simplified clinical workflow for improving efficiencies and delivering actionable, physician-guided insights. TeraRecon's Best-in-KLAS advanced visualization solution, Intuition, integrates directly into Merge PACS, creating a robust clinical workflow experience with advanced radiology, cardiac, vascular, neurology and pulmonology tools tightly integrated into the interpretation workflow.

[More about TeraRecon ↗](#)



SECTION 03

# Learn more about Merative

## About Merative

Merative provides data, analytics, and software for healthcare and government social services. With focused innovation and deep expertise, Merative works with providers, employers, health plans, governments, and life sciences companies to drive real progress. Merative helps clients orient information and insights around the people they serve to improve decision-making and performance.

Learn more at [www.merative.com](http://www.merative.com)

## About Merge

Merge medical imaging solutions, offered by Merative, combine intelligent, scalable imaging workflow tools with deep and broad expertise to help healthcare organizations improve their confidence in patient outcomes and optimize care delivery.

Learn more at [merative.com/merge-imaging](http://merative.com/merge-imaging)

© Merative US L.P. 2024. All Rights Reserved.

Produced in the United States of America February 2024

Merative and the Merative logo are trademarks of Merative US L.P. Other product and service names might be trademarks of Merative or other companies.

The information contained in this publication is provided for informational purposes only. While efforts were made to verify the completeness and accuracy of the information contained in this publication, it is provided AS IS without warranty of any kind, express or implied. In addition, this information is based on Merative's product plans and strategy as of the date of this publication, which are subject to change by Merative without notice. Nothing contained in this publication is intended to, nor shall have the effect of, creating any warranties or representations from Merative, or stating or implying that any activities undertaken by you will result in any specific performance results. Merative products are warranted according to the terms and conditions of the agreements under which they are provided.

Any customer examples described are presented as illustrations of how those customers have used Merative products and the results they may have achieved. Actual results and performance characteristics may vary by customer.

Merge imaging solutions are manufactured by Merge Healthcare Incorporated, an affiliate of Merative US, LP 900 Walnut Ridge Drive, Hartland, WI USA 53029

SM-1093 Rev 4.0